



Egg Products

ISSN: 1949-0402

Released February 29, 2012, by the National Agricultural Statistics Service (NASS), Agricultural Statistics Board, United States Department of Agriculture (USDA).

Shell Eggs Broken Down Slightly Percent from Last Year

Shell eggs broken totaled 170 million dozen during January 2012, down slightly from January a year ago, and 1 percent above the 168 million broken last month.

Data presented in this report were compiled from Food Safety and Inspection Service (FSIS) inspection reports. The best available data at the time of publication were used.

January 2011 contained 21 weekdays (including 1 holiday) and 5 Saturdays.
January 2012 contained 22 weekdays (including 2 holidays) and 4 Saturdays.

Federally Inspected Shell Eggs Broken – United States: January 2012 with Comparisons

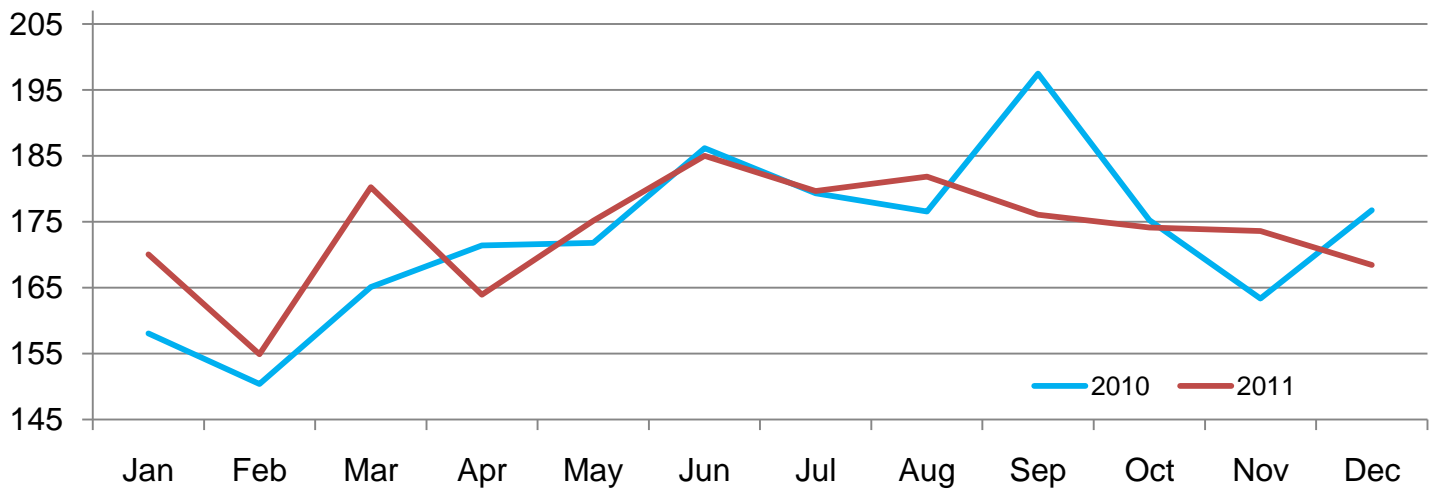
Inspected item	January 2011	December 2011	January 2012	Percent of	
				January 2011	December 2011
	(1,000 dozen)	(1,000 dozen)	(1,000 dozen)	(percent)	(percent)
Shell eggs broken	170,042	168,435	169,992	100	101
	(1,000 pounds)	(1,000 pounds)	(1,000 pounds)	(percent)	(percent)
Edible product from shell eggs broken					
Whole	138,118	140,952	133,284	97	95
White	54,490	51,829	58,001	106	112
Yolk	27,607	26,440	30,101	109	114
Total	220,215	219,221	221,386	101	101
Inedible product from shell eggs broken	19,433	18,605	19,068	98	102

Federally Inspected Shell Eggs Broken, Monthly and Cumulative – United States: 2010-2011

Month	Monthly			Cumulative		
	2010	2011	2011 as percent of 2010	2010	2011	2011 as percent of 2010
	(1,000 dozen)	(1,000 dozen)	(percent)	(1,000 dozen)	(1,000 dozen)	(percent)
January	158,042	170,042	108	158,042	170,042	108
February	150,397	154,903	103	308,439	324,945	105
March	165,117	180,237	109	473,556	505,182	107
April	171,423	163,922	96	644,979	669,104	104
May	171,818	175,135	102	816,797	844,239	103
June	186,176	184,997	99	1,002,973	1,029,236	103
July	179,300	179,653	100	1,182,273	1,208,889	102
August	176,530	181,817	103	1,358,803	1,390,706	102
September	197,455	176,058	89	1,556,258	1,566,764	101
October	175,248	174,137	99	1,731,506	1,740,901	101
November	163,359	173,591	106	1,894,865	1,914,492	101
December	176,742	168,435	95	2,071,607	2,082,927	101

Shell Eggs Broken – United States

Million dozen



Statistical Methodology

Data Sources: Data for the "Egg Products" report are obtained from Egg Products Volume Reports (FSIS Form 5200-11) completed by inspectors of FSIS, USDA. FSIS is responsible for administering a mandatory inspection program for egg products under the authority of the Egg Products Inspection Act of 1970. The act and its associated regulations require that all commercial egg breaking and processing plants operate under continuous USDA supervision. Reports are currently received from approximately 60 plants in the United States. Plant management provides monthly volume data to the resident USDA inspector at the applicable plant.

Revision Policy: Revisions are generally the result of late reports received by FSIS from plants. Revisions for the previous month and year-to-date totals are published in each monthly release.

Procedures and Reliability: FSIS reviews plant data for accuracy and completeness and provides NASS a data file. NASS reviews the data for unusual values. The egg products estimates are based on a census of all commercial egg breaking and processing plants, therefore, there are no statistical estimation and sampling errors.

Information Contacts

Listed below are the commodity specialists in the Livestock Branch of the National Agricultural Statistics Service to contact for additional information. E-mail inquiries may be sent to nass@nass.usda.gov

Dan Kerestes, Chief, Livestock Branch	(202) 720-3570
Bruce Boess, Head, Poultry and Specialty Commodities Section	(202) 720-4447
Cody Brokmeyer – Poultry Slaughter, Turkey Hatchery, Turkeys Raised	(202) 690-3237
David Colwell – Cold Storage	(202) 720-8784
Lakeya Jones – Catfish Processing, Catfish Production, Trout Production, Census of Aquaculture, Honey, Egg Products, Mink	(202) 720-0585
Kim Linonis – Layers, Eggs	(202) 690-8632
Miste Salmon – Broiler Hatchery, Chicken Hatchery	(202) 720-3244

Access to NASS Reports

For your convenience, you may access NASS reports and products the following ways:

- All reports are available electronically, at no cost, on the NASS web site: <http://www.nass.usda.gov>
- Both national and state specific reports are available via a free e-mail subscription. To set-up this free subscription, visit <http://www.nass.usda.gov> and in the “Follow NASS” box under “Receive reports by Email,” click on “National” or “State” to select the reports you would like to receive.
- Printed reports may be purchased from the National Technical Information Service (NTIS) by calling toll-free (800) 999-6779, or (703) 605-6220 if calling from outside the United States or Canada. Accepted methods of payment are Visa, MasterCard, check, or money order.

For more information on NASS surveys and reports, call the NASS Agricultural Statistics Hotline at (800) 727-9540, 7:30 a.m. to 4:00 p.m. ET, or e-mail: nass@nass.usda.gov.

The United States Department of Agriculture (USDA) prohibits discrimination in all its programs and activities on the basis of race, color, national origin, age, disability, and where applicable, sex, marital status, familial status, parental status, religion, sexual orientation, political beliefs, genetic information, reprisal, or because all or a part of an individual's income is derived from any public assistance program. (Not all prohibited bases apply to all programs.) Persons with disabilities who require alternative means for communication of program information (Braille, large print, audiotape, etc.) should contact USDA's TARGET Center at (202) 720-2600 (voice and TDD).

To file a complaint of discrimination, write to USDA, Assistant Secretary for Civil Rights, Office of the Assistant Secretary for Civil Rights, 1400 Independence Avenue, S.W., Stop 9410, Washington, DC 20250-9410, or call toll-free at (866) 632-9992 (English) or (800) 877-8339 (TDD) or (866) 377-8642 (English Federal-relay) or (800) 845-6136 (Spanish Federal-relay). USDA is an equal opportunity provider and employer.